



SPECIFICATION & PRICELIST S335

PRINCIPAL DIMENSIONS according to ISO 8666

Length Overall (Lmax)	10.31 m	33' 10"
Length of Hull (LH)	9.99 m	32' 9"
Beam (BH)	3.50 m	11' 6"
Draught (Tmax)	0.98 m	3' 3"
Air height	3.39 m	11' 1"
Fuel capacity	570 l	125 UK gal
Water capacity	220 l	48 UK gal
Displacement	6.14 t	6.04 UK t
CE Category	B	B
Max. persons	8	8

ENGINE STANDARD

1 x Volvo Penta D6-340 27/28 knots*

ENGINE OPTIONS

1 x Volvo Penta D6-440 31/32 knots*
2 x Mercury MD3,0L 270 hp TBC knots*



*All performance figures are given in good faith and are intended as an indication. These figures cannot be guaranteed as top speed in particular is affected by the cleanliness of the hull, conditions of the propellers, weight carried and air/sea temperature. Performance is related also to the optional accessories selected. SEALINE reserves the right to change specifications in line with the company policy of improvement through research and development. Standard Propeller tested in Greifswald according to Volvo conditions. All measurements/figures approximate. Errors and omissions excepted. Specification and material can be changed without notice. Please check with your dealer for a full list of inclusions. **To be confirmed after seatrial. Valid from 2023.01.01 for deliveries until 2023.12.31.



MAIN DECK



MAIN DECK
with extended
bathing platform

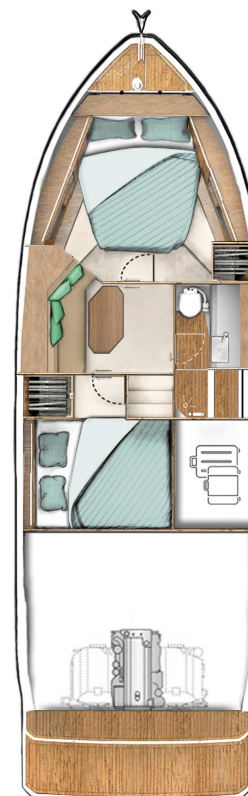


LOWER DECK
standard

A1

B1

C1

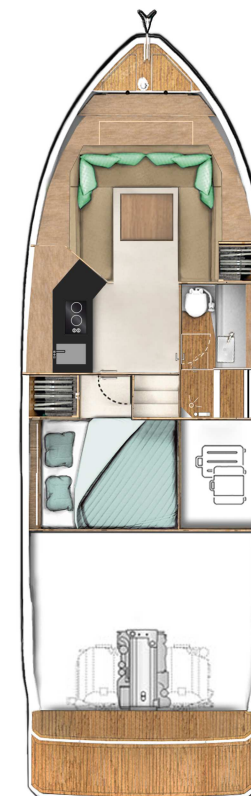


LOWER DECK
option

A1

B2

C1



LOWER DECK
option

A2

B3

C1

HULL

- GRP hull with sandwich construction, isophthalic gelcoat, colour: STAR WHITE, 1st layer vinyl ester resin
- Waterline, isophthalic gelcoat, colour: BLACK
- Aft pillar vinyl wrapped in GREY with SEALINE logo
- 2 hull windows not openable (bow cabin port side, lobby)
- 3 hull windows with openable porthole (aft cabin port side, bow cabin starboard side and toilet)

DECK & COCKPIT

- GRP deck with antislip surface, isophthalic gelcoat, colour: STAR WHITE, 1st layer vinyl ester resin, double anchor locker, self draining, anchor arm stainless steel
- Fender strip, rubber, colour: BLACK
- SEALINE steering wheel and throttles
- Full windscreen with pantograph wipers and screen wash
- SEALINE convertible fabric roof system in cockpit, manual
- SEALINE convertible fabric roof system at steering position, manual
- Open triangular side windows in cockpit
- Bathing platform in fiberglass, bathing ladder with handrail and bathing shower with hot and cold water and opening stainless steel gate.
- Stainless steel pulpit, 4 stainless steel mooring cleats, stainless steel handrails
- Seating "U"-shaped bench with fixed backrest and table with fixed leg. Manual bimini. External galley with sink, cold and hot water, fridge, 2-burner gas stove and storage. Pilot seat plus 2 copilot seats.
- Table in cockpit with fixed leg and cover, on port side, electric engine hatch

PROPULSION

- Engine room, sound insulated, fans with fire extinguisher system, automatic and manual, Batteries-Engines: 1 x 95 Ah, Battery charger 50 A (for engine and service batteries)
- 1 Volvo Penta D6 (340 hp) stern drive propeller: H3, Volvo engine instrumentation
- Volvo engine instrumentation 2.5" display
- Fuel tank, capacity: 570 litres
- Fuel Filter

ELECTRICAL EQUIPMENT

- 12 V and 230 V electric system with 230 V shore power connection. Sockets in lobby (2), bow cabin (2), aft cabin (1), toilet (1) and 12V on dashboard (1)
- Batteries-Service: 2 x 160 Ah
- Country Version: EU / AUS
- Manual toilet
- Light in cabins and lobby with dimmer. Dimmable indirect lights and reading lights in cabins. Lights in toilet, cockpit and engine room
- Holding tank (85 l)
- Water tank (220 l) with gauge, fresh water pump and boiler (22 l)
- Bilge pumps: automatic electric (2) and manual emergency bilge pump in cockpit (1)

NAVIGATION & INSTRUMENTS

- Standard dashboard with engine room fire extinguisher system
- Compass
- Navigation lights

LAYOUT & INTERIOR

- A1: Bow cabin with double berth, 1 wardrobe, drawers underneath the bed, various lockers and storage boxes. 3 skylights, one openable. Fully equipped head with separated shower stall, handheld shower and comfort seat. Manual toilet. Open bulkhead.

- B1: Lobby with storage furniture and hanging lockers
- C1: Aft cabin with double berth, 1 wardrobe and storage

UPHOLSTERY & WOOD

- Exterior seating material and upholstery helmsman seat in SARDINIA, colour: GULL WING (according to colour card).
- Standard mattresses in all cabins
- Interior furniture in high quality marine plywood: MADISON WOOD (according to colour card). Bedheads in bow cabin in MADISON WOOD (according to colour card) and aft cabin in soft material.
- Floorboard lower deck - AUSTRALIAN ACACIA (according to colour card)
- Heads flooring - wood style

TRANSPORT

- Identified locations for hand held fire extinguishers - (hand held fire extinguishers are not supplied), SEALINE Owner's Manual in SEALINE document bag

AS PER STANDARD SPECIFICATION

excl. VAT
248.500 €

PROPULSION

XC2001	Volvo Penta D6-340 (340 hp), Duoprop stern drive (single engine) with propeller H2	400 €
XC2007	Volvo Penta D6-440 (440 hp), Duoprop stern drive (single engine) with propeller (tbc)	32.900 €
XC2011	2 Mercury MD3,0L (270 hp) with stern drive, propeller and engine instrumentation	46.300 €
XC4999	Joystick for Mercury stern drives (only with XC2011)	8.150 €
XC5011	Volvo Penta multifunction 7" display	4.450 €
XC5012	1 x 7" Mercury Vessel View multifunction display instead of 2 x 4" (only with XC2011)	1.340 €
XC5101	Automatic control of roll and pitch in the trim tab (only with XW3100 or XW3101 Cruising Pack. or XW3110 or XW3111 Upgrade to Cruising Pack.)	1.450 €
XC7001	Steering wheel, adjustable tilt	800 €

PACKAGES

XW2020	Navigation Package Basic	7.050 €
XN1501	Raymarine AXIOM PRO 9 chart plotter at helm position with GPS antenna	
XN1602	Enlarged dashboard	
XW2021	Upgrade to Navigation Package Basic XW2020 - instead of AXIOM PRO 9	1.750 €

XN1502	Raymarine AXIOM PRO 12 chart plotter at helm position with GPS antenna	
--------	--	--

XW2000	Navigation Package	13.700 €
---------------	---------------------------	-----------------

XN1001	Raymarine i70s multifunctional display with transducer (speed, depth, temp) at helm position	
XN1501	Raymarine AXIOM PRO 9 chart plotter at helm position with GPS antenna	
XN1602	Enlarged dashboard	
XN2101	Raymarine Ray90 VHF	
XN3001	Raymarine Autopilot with control unit at helm position	
XN6001	VHF antenna with splitter for FM and AIS	

XW2001	Upgrade to Navigation Package XW2000 - instead of AXIOM PRO 9	1.750 €
---------------	--	----------------

XN1502	Raymarine AXIOM PRO 12 chart plotter at helm position with GPS antenna	
--------	--	--

XW3110	Cruising Package Basic	8.400 €
---------------	-------------------------------	----------------

XB4005	Anchor 10 kg, galvanized with 30 m of chain	
XB4010	Windlass electric with automatic fuse	
XB4122	2 additional cleats at mid ship, 1 at each side	
XC5100	Trim Tabs	
XC7001	Steering wheel, adjustable tilt	
XV5001	4 fenders	
XV9902	4 mooring lines	

XW3111	Upgrade to Cruising Package Basic XW3110 - instead of galvanized anchor	4.850 €
---------------	--	----------------

XB4006	Anchor 10 kg, stainless steel with 50 m of stainless steel chain	
XD1002	Battery set, capacity: 3x 160 Ah	

XD2001 Inverter/charger (only with XD1002 battery set)

XW3100 Cruising Package 14.390 €

XB4005	Anchor 10 kg, galvanized with 30 m of chain
XB4010	Windlass electric with automatic fuse
XB4122	2 additional cleats at mid ship, 1 at each side
XC5100	Trim Tabs
XC6001	Bowthruster, 4 hp
XC7001	Steering wheel, adjustable tilt
XV1000	Cockpit canopies (according to colour card)
XV1005	Cover for dashboard (according to colour card)
XV5001	4 fenders
XV9902	4 mooring lines

XW3101 Upgrade to Cruising Package XW3100 - instead of galvanized anchor 4.850 €

XB4006	Anchor 10 kg, stainless steel with 50 m of stainless steel chain
XD1002	Battery set, capacity: 3x 160 Ah
XD2001	Inverter/charger (only with XD1002 battery set)

XW5010 Comfort Package Basic 9.400 €

XB1032	Teak on cockpit floor, bathing platform and steps to the sidewalk
XD3202	Toilet, electrical
XU1020	Sunbed cushions for foredeck (according to colour card)
XV9060	Blinds for hull windows
XV9061	Blinds for hatches

XW5011 Upgrade to Comfort Package Basic XW5010 - instead of teak 1.100 €

XB1033	Synthetic teak on cockpit floor, bathing platform and steps to the sidewalk (according to colour card)
--------	--

XW5000 Comfort Package 14.600 €

XB1032	Teak on cockpit floor, bathing platform and steps to the sidewalk
XB4310	Freshwater wash down
XB5120	Trash bin in external galley
XB5201	Convertible aft backrests lower and raise
XB5501	Table in cockpit with teak and manual high/low leg, convertible into sunpad with cover
XD3202	Toilet, electrical
XD4020	6 LED lights in cockpit (ceiling)
XU1020	Sunbed cushions for foredeck (according to colour card)
XV7500	Mosquito nets in fwd hatch
XV9060	Blinds for hull windows
XV9061	Blinds for hatches

XW5001 Upgrade to Comfort Package XW5000 - instead of teak 1.100 €

XB1033	Synthetic teak on cockpit floor, bathing platform and steps to the sidewalk (according to colour card)
--------	--

XW6500 Smart Connection Package 2.990 €

XE3110	WLAN router
XN3820	Interior camera

XW7000	Entertainment Package - lobby and cockpit (only with XN6001 VHF antenna or XW2000 Nav. Pack.)	2.750 €
---------------	--	----------------

XE2000	FUSION APOLLO MS-RA770 with AM/FM in lobby (B1, B2, B3 layout)
--------	--

XE2101	2 high-end 2 way speakers in lobby (B1, B2, B3 layout)
--------	--

XE2107	2 high-end 2 way speakers in cockpit
--------	--------------------------------------

XE2207	FUSION MS-ERX400 remote control in cockpit
--------	--

XW7002	Entertainment Package - bow cabin (only with XL7300 and XN6001 VHF antenna or XW2000 Nav. Pack.)	2.700 €
---------------	---	----------------

XE2002	FUSION APOLLO MS-RA770 with AM/FM in bow cabin
--------	--

XE2103	2 high-end 2 way speakers in bow cabin
--------	--

XE5002	TV flat screen in bow cabin
--------	-----------------------------

XE5012	TV preparation in bow cabin
--------	-----------------------------

XE5111	DVB-T2 digital tv antenna
--------	---------------------------

OPTIONS

excl. VAT

HULL

XA1001	GRP hull, painted, non metallic (according to colour card)	12.750 €
--------	--	----------

XA1002	GRP hull, painted, metallic (according to colour card)	17.350 €
--------	--	----------

XA2001	Waterline, painted, non metallic (according to colour card)	1.100 €
--------	---	---------

XA2002	Waterline, painted, metallic (according to colour card)	1.300 €
--------	---	---------

XA5101	Openable porthole in Glass in bow cabin on port side	1.000 €
--------	--	---------

DECK & COCKPIT

XB1022	Teak on side decks	7.550 €
--------	--------------------	---------

XB1023	Synthetic teak on side decks (according to colour card)	7.750 €
--------	---	---------

XB1505	Hull fender strip in white rubber with stainless steel insert	2.200 €
--------	---	---------

XB1506	Hull fender strip 80 mm in grey rubber	2.200 €
--------	--	---------

XB3301	Closed side windows in cockpit with sliding openable frame	2.650 €
--------	--	---------

XB3501	Bathing platform extension with teak (only with XW5000 or XW5010 Comfort Pack.)	5.500 €
--------	---	---------

XB3506	Bathing platform extension with synthetic teak (according to colour card - only with XW5000 or XW5010 Comfort Pack. and XW5001 or XW5011 Upgrade to Comfort Pack.)	6.200 €
--------	--	---------

XB3550	Wire railing	600 €
--------	--------------	-------

XB4110	Anchor chain counter (only with XW3100 or XW3101 Cruising Pack. or XW3110 or XW3111 Upgrade to Cruising Pack.)	990 €
--------	--	-------

XB4122	2 additional cleats at mid ship, 1 at each side	700 €
--------	---	-------

XB4300	Freshwater dockside connection in transom	550 €
--------	---	-------

XB4310	Freshwater wash down	1.000 €
--------	----------------------	---------

ELECTRICAL EQUIPMENT

XD1002	Battery set, capacity: 3x 160 Ah	750 €
--------	----------------------------------	-------

XD1110	Deep charge protection for service batteries	1.390 €
--------	--	---------

XD2001	Inverter/charger (only with XD1002 battery set)	3.250 €
--------	---	---------

XD1601	Country Version: US / JPN	4.050 €
--------	---------------------------	---------

XD1602	Country Version: UK	800 €
--------	---------------------	-------

XD5014	Fridge in storage furniture in lobby (only with B1 layout)	2.200 €
--------	--	---------

XD5020	Wine fridge in storage furniture in lobby (only with B1 layout - not with XD5021 ice maker)	1.750 €
--------	---	---------

XD5021	Ice maker in storage furniture in lobby (only with B1 layout - not with XD5020 wine fridge)	2.300 €
--------	---	---------

XD3001	Fisher Panda generator 5000i, 4.0 kW	14.900 €
--------	--------------------------------------	----------

XD3101	2nd shore power 230 V or 110 V	1.850 €
--------	--------------------------------	---------

XD5002	Ceramic stove for XL2003 B3 layout (only with XD3001 generator or XD3101 2nd shore power)	1.450 €
XD4052	Indirect light package in lobby, head and cabins and courtesy lights (2) in cockpit	2.050 €
XD5030	Cockpit BBQ with gas instead of std. stove	1.200 €
XD5150	Microwave	1.150 €
XD5200	Gas Leak Detector	850 €
XD6001	Air conditioning Class E (European) (only with XD3001 generator or XD3101 2nd shore power)	11.890 €
XD6002	Air conditioning Class G (Gulf) (only with XD3001 generator or XD3101 2nd shore power)	13.100 €
XD7001	Hot air heating in aft cabin in lobby and head (not with XD6001 or XD6002 air conditioning)	4.550 €
XD7021	Additional heating outlet in cockpit (only with XD7001 hot air heating)	550 €
XD8003	Grey-water tank with electric pump for overboard discharge or deck suction	3.350 €

NAVIGATION & INSTRUMENTS

XN3560	MySEALINE Safety Cloud hardware with 30 days free trial subscription and an interior light, switchable by APP	1.290 €
XN1602	Enlarged dashboard	3.450 €
XN2020	Enlarged mast	500 €
XN2001	Raymarine Quantum Radar 2 (only with XN2020 enlarged mast and XW2000 or XW2020 Nav. Pack.)	4.200 €
XN9200	Spotlight with remote control (only with XN2020 enlarged mast)	900 €
XN3500	AIS (only with XW2000 or XW2020 Nav. Pack.)	1.750 €

XN3600	Raymarine fishfinder (only with XW2000 or XW2020 Nav. Pack)	1.800 €
XN3815	Raymarine ClearCruise Augmented Reality (AR) incl. Gyroscope, GPS antenna and Raymarine IP67 camera installed in the roof (only with XW2000 or XW2020 Nav. Pack.)	2.750 €
XN6001	VHF antenna with splitter for FM and AIS	750 €

LAYOUT & INTERIOR

XL7300	Door and bulkhead (only with A1 layout)	2.250 €
XL1002	A2: Bow cabin with "U"-shaped sofa and table with manual high/low leg convertible into a bed with open bulkhead (upholstery scheme according to colour card). Fully equipped head with separated shower	5.100 €
XL2002	B2: Lobby with sofa, coffee table, TV with antenna and drawer fridge underneath the sofa and openable porthole (upholstery scheme according to colour card)	5.650 €
XL2003	B3: Lobby with galley equipped with stowage, fridge, 2 burner gas stove and sink, countertop in BISTRO material (according to colour card) and openable porthole	5.550 €
XL8001	Countertop in B3 layout lower deck galley - SPRING WHITE (frames in marine mineral stone, top in HPL - according to colour card)	550 €

UPHOLSTERY & WOOD

XU1000	Interior upholstery for A2 layout - CASABLANCA, colour: PEARL WHITE (according to colour card)	Standard
XU1001	Interior upholstery for A2 layout - BALI (according to colour card)	900 €
XU1002	Interior upholstery for A2 layout - CAPETOWN (according to colour card)	1.050 €
XU1003	Interior upholstery for A2 layout - LIMA (according to colour card)	1.500 €

XU1004	Interior upholstery for A2 layout - LONG ISLAND LEATHER (according to colour card)	3.150 €
XU1005	Interior upholstery for B2 layout - CASABLANCA, colour: PEARL WHITE (according to colour card)	Standard
XU1006	Interior upholstery for B2 layout - BALI (according to colour card)	550 €
XU1007	Interior upholstery for B2 layout - CAPETOWN (according to colour card)	650 €
XU1008	Interior upholstery for B2 layout - LIMA (according to colour card)	900 €
XU1009	Interior upholstery for B2 layout - LONG ISLAND LEATHER (according to colour card)	1.700 €
XU1011	Exterior upholstery - SARDINIA (according to colour card)	850 €
XU1012	Exterior upholstery - MADEIRA (according to colour card)	700 €
XU1013	Exterior upholstery - MALIBU (according to colour card)	850 €
XU1025	Exterior upholstery - bicoloured upholstery with cupholders (according to colour card)	1.950 €
XU1020	Sunbed cushions for foredeck (according to colour card)	2.300 €
XU1110	Comfort mattresses for C1 layout	500 €
XU1111	Comfort mattresses for A1 and C1 layout	900 €
XU1500	Carpet in cabins (according to colour card)	1.700 €
XU5001	Furniture - ONTARIO OAK (according to colour card)	5.650 €
XU5002	Furniture - SHERWOOD CHESTNUT (according to colour card)	5.100 €
XU5003	Furniture - ATLANTA WALNUT (according to colour card)	4.150 €
XU5100	Furniture - HIGH GLOSS FINISH (only for XU5002 or XU5003)	8.450 €
XU6011	Floorboard lower deck - VELVET OAK (according to colour card)	1.150 €
XU6012	Floorboard lower deck - VENECIAN BLACK WALNUT (according to colour card)	900 €
XU6013	Floorboard lower deck - CALIFORNIAN OAK (according to colour card)	1.150 €

ACCESSORIES

XV1005	Cover for dashboard (according to colour card)	800 €
XV1007	Outside screen cover, front and side triangle screen (according to colour card)	2.050 €
XV1008	Cover for bow cushions (according to colour card)	1.150 €
XV2300	Wind protection for side and aft superstructure (according to colour card) (not with XW3100)	2.500 €
XV9380	Shrink wrap foil (for storage purpose only / not for transport) (not with painted related options XA1001, XA1002, XA2001, XA2002)	1.100 €

TRANSPORT

XZ2001	Loading on truck with disassembled deck parts and antennas	650 €
XZ2010	Cradle for sea transport	3.350 €
XZ2020	Ready for pickup	600 €

All mentioned prices in €, basic prices ex yard and excl. VAT. All weights and measures are calculated numbers based on the construction data. Changes in construction and equipment reserved. Above mentioned prices are recommended for ex yard deliveries within 4 month after order confirmation. For later delivery time the company reserves right to apply latest price list. Company reserves additional 15 working days when painted hull or deck is ordered. All measurements/figures are approximate. Errors and omissions excepted. Specification and material can be changed without notice. Valid from 2023.01.01 for deliveries until 2023.12.31.