

SPECIFICATION & PRICELIST F530

PRINCIPAL DIMENSIONS according to ISO 8666

Length Overall (Lmax)	16.13 m	52' 11"
Length of Hull (LH)	14.64 m	48' 0"
Beam (BH)	4.56 m	14' 11"
Draught (Tmax)	1.20 m	3' 11"
Air height	6.05 m	19' 10"
Fuel capacity	1560 l	343 UK gal
Water capacity	766 l	168 UK gal
Displacement	20.37 t	20.05 UK t
CE Category	B	B
Max. persons	12	12

ENGINE STANDARD

2 x Volvo Penta IPS700 - Pod drive 30 knots*

ENGINE OPTION

2 x Volvo Penta IPS800 - Pod drive 34 knots*

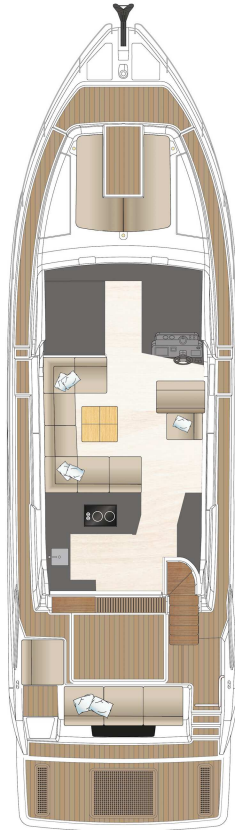


*All performance figures are given in good faith and are intended as an indication. These figures cannot be guaranteed as top speed in particular is affected by the cleanliness of the hull, conditions of the propellers, weight carried and air/sea temperature. Performance is related also to the optional accessories selected. SEALINE reserves the right to change specifications in line with the company policy of improvement through research and development. Standard Propeller tested in Greifswald according to Volvo conditions. All measurements/figures approximate. Errors and omissions excepted. Specification and material can be changed without notice. Please check with your dealer for a full list of inclusions. **To be confirmed after seatrial. Valid from 2023.01.01 for deliveries until 2023.12.31.



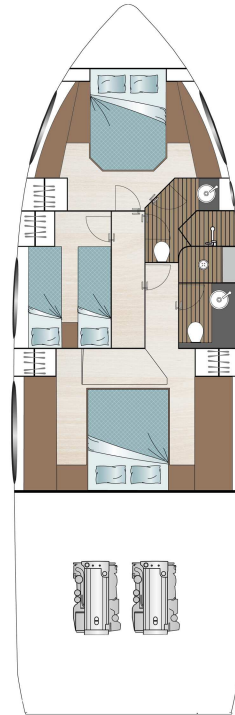
FLY

F1



MAIN DECK

E1



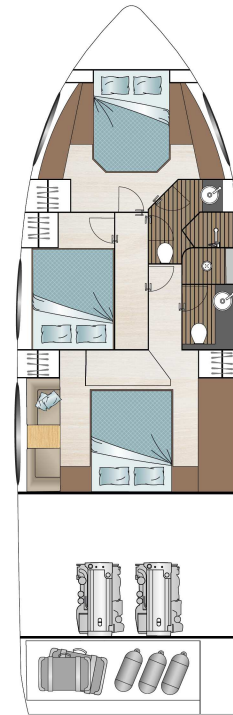
LOWER DECK
standard

A1

B1

C1

D1



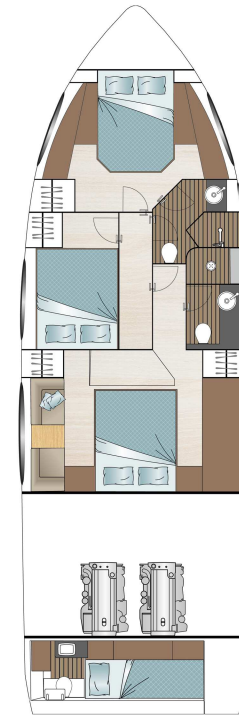
LOWER DECK
optional

A1

B2

C2

D2



LOWER DECK
optional

A1

B2

C2

D3

HULL

- GRP hull with sandwich construction, isophthalic gelcoat, colour: STAR WHITE, 1st layer vinyl ester resin
- Waterline, isophthalic gelcoat, colour: BLACK
- Aft pillar vinyl wrapped in GREY with SEALINE logo
- 2 hull windows (master cabin port side, VIP cabin port side)
- 5 hull windows with openable porthole (master cabin starboard side, VIP cabin starboard side, guest cabin and toilettes)

DECK & COCKPIT

- GRP deck with antislip surface, isophthalic gelcoat, colour: STAR WHITE, 1st layer vinyl ester resin, anchor locker, self draining, anchor arm stainless steel
- Fender strip, rubber, colour: WHITE, with stainless steel inlay
- SEALINE steering wheel with tilting system, joystick and throttles
- Full windscreen with pantograph wipers and screen wash
- Panoramic tinted full glass windows with door to starboard side and two fixed skylights in saloon
- Bifold door between cockpit and galley and tilting window to enlarge galley into cockpit
- Bathing platform and steps to cockpit with teak, bathing ladder with handrail and bathing shower with hot and cold water and opening stainless steel gate.
- Stainless steel pulpit, 6 stainless steel mooring cleats, stainless steel handrails
- Seating bench with fixed backrest at stern and on port side with storage and foldable teak bar, electric bimini
- U-shaped bench at bow with storage box
- Manual engine hatch

PROPULSION

- Engine room, sound insulated, fans with fire extinguisher system, automatic and manual, Batteries-Engines: 2 x 90 Ah / 12 V, Battery charger 30 A (only for engine batteries)
- 2 Volvo Penta IPS700 (550 hp) - Pod drive including josticks control (fly and main bridge) with propeller N3
- Volvo engine instrumentation 7" display at lower and upper helmstation
- Volvo Interceptor System, manuell
- Fuel tank, capacity: 1560 litres
- Fuel Filter
- Steering wheel, fixed
- Steering wheel on flybridge, fixed

ELECTRICAL EQUIPMENT

- 12 V and 230 V electric system with 230 V shore power connection. Sockets in saloon (1), master cabin (3), VIP cabin (2), galley (3), guest cabin (1), toilettes (1), engine room (1) and 12V on dashboard (1)
- Batteries-Service: 3 x 260 Ah / 12 V, inverter/charger 12 V / 3000 W - 150 A
- Country Version: EU / AUS
- Electric toilets
- Light in cabins, saloon and galley with dimmer. Dimmable indirect lights and reading lights in cabins. Lights in toilettes, cockpit and engine room
- Front screen demister
- Holding tank (340 l)
- Water tank (766 l) with gauge, fresh water pump and boiler (40 l)
- Bilge pumps: automatic electric (2) and manual emergency bilge pump in cockpit (1)

NAVIGATION & INSTRUMENTS

- Standard GRP dashboard at main helm (flybridge) and main bridge with engine room fire extinguisher system

- Compass
- Navigation lights

LAYOUT & INTERIOR

- A1: VIP cabin with double berth, wardrobe and sideboards with stowage, mirror and 2 bedside tables, 1 drawer underneath the bed. 3 Skylights, one openable, direct access to separated day head
- B1: Guest cabin with twin berths, wardrobe and stowage on port side and bed table. Fully equipped day and guest head, separate shower stall with handheld shower and bracket. Comfort seat with wood cover.
- C1: Master cabin with double berth and drawers underneath, wardrobes and sideboards with stowage on both sides, mirrors and 2 bedside tables. Fully equipped master cabin head, separate shower stall with raining and hand shower, comfort seat with wood cover
- D1: Engine room with possibility to upgrade to D2 (storage room) or D3 (crew cabin)
- E1: Saloon with two sofas, convertible into U-shaped sofa. Pilot and copilot seats at secondary helm station which can be transformed into a chaiselongue. Galley with stowage, fridge with freezer compartment, ceramic electric stove - 2 burners, microwave with grill and sink with draining basin.
- F1: Flybridge with 2 pilots seat, 2 copilot seats, "U" shaped sofa with storage underneath and foldable cockpit table with cover, sunbed with cupholder. Wetbar with sink, hot and cold water and storage underneath. Roll bar in GRP for instrumentation, anchor and steaming light and flag hooks. Handrail on entrance and stairs to cockpit. Acrylic windshield. Stainless steel railing around the flybridge.
- Saloon table with fixed leg
- Hanging lockers in galley
- Worktop in galley - MARINE MINERAL STONE, colour: PEBBLE GREY (according to

colour card)

UPHOLSTERY & WOOD

- Upholstery scheme CASABLANCA, colour: PEARL WHITE (according to colour card)
- Exterior seating material in SARDINIA, colour: GULL WING (according to colour card)
- Upholstery helmsman seats: LONG ISLAND LEATHER, colour: PALISANDER (according to colour card). Cabin bedheads in Spradling Horizon, colour: IVOIRE and bedframes in Diamante, colour METEOR.
- Standard mattresses in all cabins
- Carpet in cabins (according to colour card)
- Interior furniture in high quality marine plywood: MADISON WOOD (according to colour card)
- Saloon and galley flooring in AUSTRALIAN ACACIA (according to colour card)

TRANSPORT

- Identified locations for hand held fire extinguishers - (hand held fire extinguishers are not supplied), SEALINE Owner's Manual in SEALINE document bag

AS PER STANDARD SPECIFICATION		excl. VAT 1.102.500 €
PROPULSION		
XC2006	2 Volvo Penta IPS700 (550 hp) - Pod drive including joystick control (fly and main bridge) with propeller N2	400 €
XC2010	2 Volvo Penta IPS800 (600 hp) - Pod drive including joystick control (fly and main bridge) with propeller N4	34.550 €
XC2011	2 Volvo Penta IPS800 (600 hp) - Pod drive including joystick control (fly and main bridge) with propeller N3	34.850 €
XC4001	Docking Station, 3rd joystick control in cockpit (incl. bowthruster control, when XW3000 selected)	6.700 €
XC5005	Volvo Penta Dynamic Positioning System	25.300 €
XC5101	Auto trim, List and Coordinated Turn for Volvo Interceptor System	7.450 €
XC5201	Double fuel filter with bypass	4.000 €
XC7011	Steering wheel on flybridge, adjustable tilt	800 €
PACKAGES		
XW2020	Navigation Package Basic	16.150 €
XN1001	Raymarine i70s multifunctional display with transducer (speed, depth, temp) at helm position in saloon	
XN1021	Raymarine i70s multifunctional display at helm position on flybridge	
XN1501	Raymarine AXIOM PRO 12 chart plotter with GPS antenna at helm position in saloon	
XN1521	Raymarine AXIOM PRO 12 chart plotter at helm position on flybridge	
XN1602	Enlarged dashboard	

XW2021	Upgrade to Navigation Package Basic XW2020 - instead of AXIOM PRO 12	6.100 €
---------------	---	----------------

XN1502	Raymarine AXIOM XL 16 chart plotter with GPS antenna at helm position in saloon
--------	---

XN1522	Raymarine AXIOM XL 16 chart plotter at helm position on flybridge
--------	---

XW2000	Navigation Package	24.600 €
---------------	---------------------------	-----------------

XN1001	Raymarine i70s multifunctional display with transducer (speed, depth, temp) at helm position in saloon
--------	--

XN1021	Raymarine i70s multifunctional display at helm position on flybridge
--------	--

XN1501	Raymarine AXIOM PRO 12 chart plotter with GPS antenna at helm position in saloon
--------	--

XN1521	Raymarine AXIOM PRO 12 chart plotter at helm position on flybridge
--------	--

XN1602	Enlarged dashboard
--------	--------------------

XN2101	Raymarine Ray90 VHF
--------	---------------------

XN2102	Control unit for Raymarine Ray90 VHF on flybridge
--------	---

XN3001	Autopilot with control unit at helm position
--------	--

XN3002	Additional autopilot control unit at 2nd helm position
--------	--

XN6001	VHF antenna with splitter for FM and AIS
--------	--

XW2010	Upgrade to Navigation Package XW2000 - instead of AXIOM PRO 12	6.100 €
---------------	---	----------------

XN1502	Raymarine AXIOM XL 16 chart plotter with GPS antenna at helm position in saloon
--------	---

XN1522	Raymarine AXIOM XL 16 chart plotter at helm position on flybridge
--------	---

XW3110 Cruising Package Basic 14.900 €

XB4000	Anchor 32 kg, stainless steel with 60 m chain
XB4010	Reversible electric windlass with automatic fuse and remote control at both helm stations
XB4120	4 additional cleats, 2 at each side
XV1010	Cover set for flybridge (according to colour card)
XV5001	8 fenders
XV9902	4 mooring lines

XW3100 Cruising Package 29.300 €

XB4000	Anchor 32 kg, stainless steel with 60 m chain
XB4010	Reversible electric windlass with automatic fuse and remote control at both helm stations
XB4120	4 additional cleats, 2 at each side
XC6001	Bowthruster, 9 hp
XV1000	Cockpit canopies (according to colour card)
XV1007	Outside screen cover (according to colour card)
XV1010	Cover set for flybridge (according to colour card)
XV5001	8 fenders
XV9902	4 mooring lines

XW5010 Comfort Package Basic 22.500 €

XB1034	Teak on cockpit floor, sidewalks (first step included) and two steps to cockpit
XL7010	Bow table with cover and possibility to convert into sunpad (only with XU1020)
XU1020	Bow dinette cushions (according to colour card)

XV4110 Infill copilot cushion for copilot seat on flybridge

XV7500 Mosquito nets in fwd hatch

XW5011 Upgrade to Comfort Package Basic XW5010 - instead of teak 3.500 €

XB1035 Synthetic teak on cockpit floor, sidewalks (first step included) and two steps to cockpit (according to colour card)

XW5000 Comfort Package 34.900 €

XA5102	Openable glass porthole in VIP cabin on port side
XA5105	Openable glass porthole in master cabin on port side
XB1034	Teak on cockpit floor, sidewalks (first step included) and two steps to cockpit
XB1040	Teak on flybridge
XD5016	Fridge on flybridge under helmsman seat
XD5031	BBQ, electric, on flybridge (only with XD3001)
XL7010	Bow table with cover and possibility to convert into sunpad (only with XU1020)
XU1020	Bow dinette cushions (according to colour card)
XV4110	Infill copilot cushion for copilot seat on flybridge
XV7500	Mosquito nets in fwd hatch

XW5001 Upgrade to Comfort Package XW5000 - instead of teak 4.750 €

XB1035 Synthetic teak on cockpit floor, sidewalks (first step included) and two steps to cockpit (according to colour card)

XB1041 Synthetic teak on flybridge (colour selection)

XW5500 Exterior Lighting Package 3.450 €

XD4001	LED light package on side decks
XD4002	5 courtesy lights on flybridge
XD4031	3 pop-up-lights at bow
XD4041	3 spot lights above each side walk

XW7000 Entertainment Package - saloon and cockpit (only with XN6001 or XW2000) 3.450 €

XE2000	FUSION APOLLO MS-RA770 with AM/FM in saloon
XE2101	4 high-end 2 way speakers in saloon
XE2107	2 high-end 2 way speakers in cockpit
XE2111	FUSION MS-AB206 - Dual Marine Active Subwoofer in saloon
XE2207	FUSION MS-ERX400 remote control in cockpit
XE3110	FUSION wireless link - remote control via mobile devices

XW7002 Entertainment Package - VIP cabin (only with XE5110 or XE5111 and XN6001 or XW2000) 3.450 €

XE2002	FUSION APOLLO MS-RA770 with AM/FM in VIP cabin
XE2103	2 high-end 2 way speakers in VIP cabin
XE5002	TV flat screen in VIP cabin
XE5012	TV preparation in VIP cabin

XW7003 Entertainment Package - guest cabin (only with XE5110 or XE5111 and XN6001 or XW2000) 3.450 €

XE2003	FUSION APOLLO MS-RA770 with AM/FM in guest cabin
XE2104	2 high-end 2 way speakers in guest cabin
XE5003	TV flat screen in guest cabin
XE5013	TV preparation in guest cabin

XW7010 Entertainment Package - flybridge (only with XN6001 or XW2000) 2.300 €

XE2001	FUSION APOLLO MS-RA770 with AM/FM on flybridge
XE2102	4 high-end 2 way speakers on flybridge

XW7015 Entertainment Package - master cabin (only with XE5110 or XE5111 and XN6001 or XW2000) 4.600 €

XE2005	FUSION APOLLO MS-RA770 with AM/FM in owner cabin
XE2106	4 high-end 2 way speakers in owner cabin
XE2116	FUSION MS-AB206 - Dual Marine Active Subwoofer in owner cabin
XE5005	TV flat screen in owner cabin
XE5015	TV preparation in owner cabin

XW7018 Entertainment Package - bow (only with XW7010) 1.100 €

XE2108	2 high-end 2 way speakers in on bow
XE2208	FUSION MS-ERX400 remote control on bow

XW7501 TV Package - saloon (only with XE5110 or XE5111) 5.400 €

XE5001	TV in saloon with high/low system, rotating 180 degrees
XE5010	TV preparation in saloon
XE5050	TV lifting system in saloon

OPTIONS

excl. VAT

HULL

XA1001	GRP hull, painted, non metallic (according to colour card)	33.400 €
XA1002	GRP hull, painted, metallic (according to colour card)	44.000 €
XA2001	Waterline, painted, non metallic (according to colour card)	1.850 €
XA2002	Waterline, painted, metallic (according to colour card)	2.200 €

DECK & COCKPIT		
XB1021	Teak on side decks and bow	13.400 €
XB1022	Synthetic teak on side decks and bow (according to colour card)	13.700 €
XB1040	Teak on flybridge	13.400 €
XB1041	Synthetic teak on flybridge (colour selection)	13.600 €
XB3001	Passerelle, retractable	30.600 €
XB3211	Saloon door, port side	4.500 €
XB3212	Saloon door, starboard side	4.500 €
XB3502	High/Low movable bathing platform (hydro electric with safety lock system, 600 kg lift capacity)	28.890 €
XB3505	Bathing platform with synthetic teak (according to colour card)	1.050 €
XB4000	Anchor 32 kg, stainless steel with 60 m chain	2.200 €
XB4050	Mooring winch at stern on starboard side	2.500 €
XB4110	Anchor chain counter at both helm stations	1.790 €
XB4300	Freshwater dockside connection in transom	550 €
XB4310	Freshwater wash down	1.000 €
XB5101	Convertible aft backrest lower and raise (electric) in cockpit	3.400 €
XB5500	Table in cockpit with fixed leg, cover and electric engine hatch	5.100 €
XB5501	Table in cockpit with high/low leg, cover, sun cushion and electric engine hatch	8.200 €
XB5611	2 cockpit chairs, foldable	1.650 €
XB7500	Dinghy Chocks loose on board	900 €
XB9101	Hard top (only with XC2010 or XC2011)	43.900 €

ELECTRICAL EQUIPMENT		
XD1002	Battery set, capacity: 5x 260 Ah	4.300 €
XD1110	Deep charge protection for service batteries	1.390 €
XD1601	Country Version: US / JPN	4.050 €
XD1602	Country Version: UK	1.450 €
XD3001	Fisher Panda generator 15000i, 12.0 kW	25.300 €
XD3101	2nd shore power 230 V or 110 V	1.850 €
XD3201	Toilet with bidet faucet in owner cabin	700 €
XD3301	Anti Rolling Gyro	86.500 €
XD4012	6 underwater multicolour lights (blue, green, red and white) at stern	6.950 €
XD4013	4 underwater multicolour lights (blue, green, red and white) underneath owner hull windows	4.600 €
XD5002	Electric cooktop, 4-rings	1.200 €
XD5014	Additional refrigerator in saloon (not with XD5020)	2.100 €
XD5017	Refrigerator in master cabin (not with XD5311)	1.850 €
XD5020	Wine fridge in aft saloon (not with XD5014)	1.750 €
XD5021	Icemaker in galley (not with XD5210)	2.300 €
XD5022	Icemaker on flybridge	2.300 €
XD5160	Electric oven with microwave function	2.200 €
XD5210	Dishwasher (not with XD5021)	2.300 €
XD5311	Washer/dryer in the locker under companionway	2.300 €
XD5500	Watermaker 200 l/h (not with XD6002)	25.300 €
XD6001	Central air conditioning with chill system Class E (European) incl. 2nd shore power (only with XD3001)	47.390 €
XD6002	Central air conditioning with chill system Class G (Gulf) incl. 2nd shore power (only with XD3001)	66.050 €

XD6011	Air conditioning in crew cabin (only with XD6001 or XD6002)	4.290 €
XD7051	Hot water ring heating system	13.300 €
XD7060	Hot water ring heating system in crew cabin (only with XD7051)	2.100 €
XD8003	Grey-water tank with electric pump for overboard discharge or deck suction	5.650 €

ENTERTAINMENT

XE5110	Raymarine 45 STV satellite antenna	9.100 €
XE5111	DVB-T2 digital tv antenna	1.050 €

NAVIGATION & INSTRUMENTS

XN1005	Additional Raymarine i70s multifunctional display at helm position in saloon	800 €
XN1025	Additional Raymarine i70s multifunctional display at helm position on flybridge	800 €
XN1506	Additional Raymarine AXIOM PRO 12 touch chart plotter at helm position in saloon (only with XW2000 or XW2020)	5.200 €
XN1507	Additional Raymarine AXIOM XL 16 touch chart plotter at helm position in saloon (only with XW2010 or XW2021)	7.300 €
XN1602	Enlarged dashboard	4.050 €
XN2001	Raymarine Quantum Radar 2 (only with XN2004 and XW2000 or XW2010 or XW2020 or XW2021)	4.200 €
XN2004	Enlarged mast	1.150 €
XN2011	Empty Radar dome for symmetry	1.750 €
XN3500	AIS (only with XW2000 or XW2010 or XW2020 or XW2021)	1.750 €
XN3560	MySEALINE Safety Cloud hardware with 30 days free trial subscription and an interior light, switchable by APP	1.490 €

XN3600	Raymarine fishfinder (only with XW2000 or XW2010 or XW2020 or XW2021)	1.800 €
XN3800	Camera aft facing (only with XW2000 or XW2010 or XW2020 or XW2021)	2.190 €
XN3805	Thermal camera aft facing (only with XW2000 or XW2010 or XW2020 or XW2021)	19.000 €
XN3811	Thermal/imaging camera in engine room (only with XW2000 or XW2010 or XW2020 or XW2021)	2.450 €
XN3815	Raymarine ClearCruise Augmented Reality (AR) incl. Gyroscope, GPS antenna and Raymarine IP67 camera installed in the roof (only with XW2000 or XW2010 or XW2020 or XW2021)	2.750 €
XN4101	Satellite telephone - KVH Tracphone V3IP, Mini Vsat-System	34.550 €
XN6001	VHF antenna with splitter for FM and AIS	750 €
XN9200	Spotlight with remote control (only with XN2004)	900 €

LAYOUT & INTERIOR

XL2002	B2: Guest cabin with double berth and 2 drawers underneath, wardrobe and stowage on port side. Fully equipped day and guest head with separate shower stall.	1.850 €
XL3002	C2: Master cabin with double berth and 2 bedside tables, wardrobes, vanity area (composed of a table with mirror, between two seats) on port side and sideboard with stowage on starboard side. Fully equipped master head with separate shower stall.	4.050 €
XL4002	D2: Engine room with storage space, door and window	5.200 €
XL4003	D3: Engine room with crew cabin, single berth, stowage, sink, toilet, door and window.	8.100 €
XL7001	Saloon table, foldable, with high/low and drifting movement	1.950 €

XL7010	Bow table with cover and possibility to convert into sunpad (only with XU1020)	4.400 €
XL8001	Worktop in galley - MARINE MINERAL STONE (according to colour card)	1.100 €

XU6012	Floorboard in saloon and galley - VELVET OAK (according to colour card)	2.800 €
XU6013	Floorboard in saloon and galley - CALIFORNIAN OAK (according to colour card)	2.800 €

UPHOLSTERY & WOOD

XU1001	Upholstery - BALI (according to colour card)	3.400 €
XU1002	Upholstery - CAPETOWN (according to colour card)	3.900 €
XU1003	Upholstery - LIMA (according to colour card)	4.450 €
XU1004	Upholstery - LONG ISLAND LEATHER (according to colour card)	6.350 €
XU1005	Upholstery upgrade in saloon, square stitches design with pillows (according to colour card)	1.850 €
XU1011	Exterior upholstery - SARDINIA (according to colour card)	1.650 €
XU1012	Exterior upholstery - MADEIRA (according to colour card)	1.350 €
XU1013	Exterior upholstery - MALIBU (according to colour card)	1.650 €
XU1020	Bow dinette cushions (according to colour card)	2.800 €
XU1031	Upholstery helmsman seat/chaise longue main bridge - LONG ISLAND LEATHER (according to colour card)	1.150 €
XU1110	Comfort mattresses for all berths	3.400 €
XU1500	Carpet in saloon (according to colour card)	3.000 €
XU2020	Cushion with backrest on top of the anchor locker at bow	1.750 €
XU5001	Furniture - ONTARIO OAK (according to colour card)	8.000 €
XU5002	Furniture - SHERWOOD CHESTNUT (according to colour card)	8.550 €
XU5003	Furniture - ATLANTA WALNUT (according to colour card)	7.400 €
XU5100	Furniture - HIGH GLOSS FINISH (only for XU5002 or XU5003)	16.550 €
XU6011	Floorboard in saloon and galley - VENECIAN BLACK WALNUT (according to colour card)	2.200 €

ACCESSORIES

XV1008	Cover for bow cushions (according to colour card)	1.450 €
XV2020	2 biminis in the fly (aft 1 with light) connected with an infill part (according to colour card)	16.050 €
XV7500	Mosquito nets in fwd hatch	950 €
XV9062	Plisses for saloon and cabins, colour: WHITE, plus blackout blinds in cabins	7.400 €
XV9140	Blinds on bifold door and tilting window	1.150 €
XV9380	Shrink wrap foil (for storage purpose only / not for transport) (not with XA1001, XA1002, XA2001, XA2002)	1.800 €
XV9910	Electronic safe in owner cabin (not with XD5311)	750 €

TRANSPORT

XZ2001	Loading on truck with disassembled fly deck parts and antennas	1.800 €
XZ2010	Oversea shipping cradle	4.050 €
XZ2011	IPS Pods removable, loading separated on truck	2.300 €
XZ2020	Ready for pickup	600 €

All mentioned prices in €, basic prices ex yard and excl. VAT. All weights and measures are calculated numbers based on the construction data. Changes in construction and equipment reserved. Above mentioned prices are recommended for ex yard deliveries within 4 month after order confirmation. For later delivery time the company reserves right to apply latest price list. Company reserves additional 15 working days when painted hull or deck is ordered. All measurements/figures are approximate. Errors and omissions excepted. Specification and material can be changed without notice. Valid from 2023.01.01 for deliveries until 2023.12.31.