



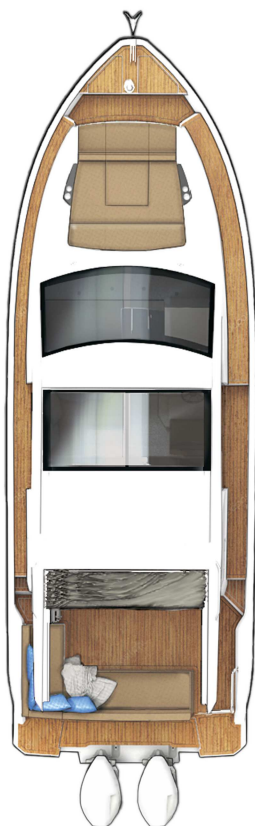
## SPECIFICATION & PRICELIST C335v

### PRINCIPAL DIMENSIONS according to ISO 8666

|                                     |         |            |
|-------------------------------------|---------|------------|
| Length Overall (Lmax)               | 10.31 m | 33' 10"    |
| Length Overall (Lmax) - ext. platf. | 11.01 m | 36' 1"     |
| Length of Hull (LH)                 | 10.07 m | 33' 0"     |
| Beam (BH)                           | 3.50 m  | 11' 6"     |
| Draught (Tmax)                      | 0.89 m  | 2' 11"     |
| Air Height                          | 3.48 m  | 11' 5"     |
| Fuel capacity                       | 570 l   | 125 UK gal |
| Water capacity                      | 220 l   | 48 UK gal  |
| Displacement                        | 7.27 t  | 7.16 UK t  |
| CE Category                         | B       | B          |
| Max. persons                        | 8       | 8          |



\*Max. outboard horse power: 2x300 hp; max. speed allowed: 40 knots. SEALINE reserves the right to change specifications in line with the company policy of improvement through research and development. All measurements/figures approximate. Errors and omissions are excepted. Specification and material can be changed without notice. Please check with your dealer for a full list of inclusions. Valid from 2023.01.01 for deliveries until 2023.12.31.



ROOF  
standard



MAIN DECK  
optional  
with fixed cockpit  
table and extended  
bathing platform

C1



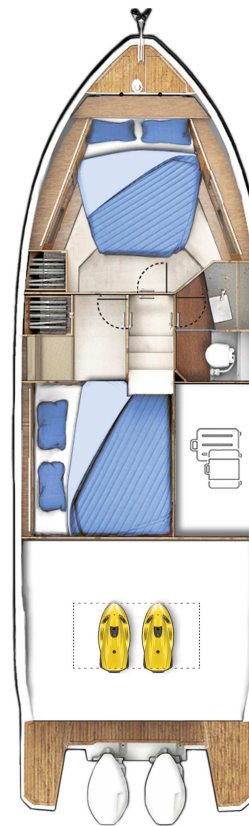
MAIN DECK  
optional  
with cockpit table to  
be transformed into  
sunpad and extended  
bathing platform

C1



LOWER DECK  
standard

A1



LOWER DECK  
optional

A1

B2

## HULL

- GRP hull with sandwich construction, isophthalic gelcoat, colour: STAR WHITE, 1st layer vinyl ester resin
- Waterline, isophthalic gelcoat, colour: BLACK
- Aft pillar vinyl wrapped in GREY with SEALINE logo
- 3 hull windows (master cabin port side and starboard side, VIP cabin port side)
- 3 hull windows with openable porthole (VIP cabin port side, toilet and master cabin starboard side)

## DECK & COCKPIT

- GRP deck with antislip surface, isophthalic gelcoat, colour: STAR WHITE, 1st layer vinyl ester resin, anchor locker self draining, anchor arm stainless steel
- Hull fender strip in black rubber
- SEALINE steering wheel
- Full windscreen with pantograph wipers and screen wash
- Panoramic full glass windows and one fixed skylight in saloon
- SEALINE convertible fabric roof system in cockpit, manual
- Bifold door between cockpit and galley and tilting window to enlarge galley into cockpit
- Bathing platform in fiberglass, bathing ladder with handrail and bathing shower with hot and cold water and opening stainless steel gate.
- Stainless steel pulpit, 4 stainless steel mooring cleats, stainless steel handrails
- Seating "L"-shaped bench with fixed backrest at stern and port side with storage and foldable teak bar, manual bimini
- Bench at bow, GRP surface
- Manual engine hatch

## PROPULSION

- Engine battery preparation including main switches
- Fuel tank, capacity: 570 l

## ELECTRICAL EQUIPMENT

- 12 V and 230 V electric system with 230 V shore power connection. Sockets in saloon (2), master cabin (1), guest cabin (1), galley (2), toilet (1) and 12 V on dashboard (1)
- Batteries-Service: 2 x 160 Ah
- Country Version: EU / AUS
- Manual toilet
- Light in cabins, saloon and galley with dimmer. Dimmable indirect lights and reading lights in cabins. Lights in toilet, cockpit and storage room.
- Holding tank (85 l)
- Water tank (220 l) with gauge, fresh water pump
- Bilge pumps: automatic electric (2) and manual emergency bilge pump in cockpit (1)

## NAVIGATION & INSTRUMENTS

- Standard dashboard
- Compass
- Navigation lights

## LAYOUT & INTERIOR

- A1: Master cabin with double berth, 1 wardrobe, drawers underneath the bed, various lockers and storage boxes. 3 skylights, one openable. Fully equipped head with separated shower stall, handheld shower and comfort seat with fiberglass cover. Manual toilet.
- B1: Guest cabin with twin berths, 1 wardrobe, 1 seat and storage
- C1: Saloon with "L"-shaped sofa and pilot seat. Galley with stowage, fridge, gas stove - two-burner, 1 gas oven and sink with draining basin.

- Saloon table with fixed leg
- Counter tops in galley, in BISTRO material (according to colour card)

## UPHOLSTERY & WOOD

- Interior upholstery scheme CASABLANCA, colour: PEARL WHITE (according to colour card)
- Exterior seating material in SARDINIA, colour: GULL WING (according to colour card)
- Upholstery helmsman seat material in CASABLANCA, colour: PEARL WHITE (according to colour card)
- Standard mattresses in all cabins
- Interior furniture in high quality marine plywood: MADISON WOOD (according to colour card)
- Floorboard in saloon, galley and cabins - AUSTRALIAN ACACIA (according to colour card)
- Heads flooring - wood style

## TRANSPORT

- Declaration of Conformity
- Safety manual
- Identified locations for hand held fire extinguishers - (hand held fire extinguishers are not supplied), SEALINE Owner's Manual in SEALINE document bag

## AS PER STANDARD SPECIFICATION

excl. VAT  
216.000 €

## PROPULSION

|        |   |           |
|--------|---|-----------|
| XC1030 | 2 Mercury Verado V8 300 hp white color with rigging                                       | 103.150 € |
| XC1120 | Preparation for engine Mercury Verado V8 300 hp, incl. 2 x 4" digital engine indicator    | 12.600 €  |
| XC1122 | Preparation for engine Yamaha 300 hp, incl. 1 x 7" digital engine indicator               | 23.000 €  |
| XC1123 | Preparation for engine Yamaha 300 hp, incl. 1 x 7" digital engine indicator with joystick | 36.500 €  |
| XC1201 | 2 electrohydraulic lifting jack plates  | 6.250 €   |
| XC5101 | Trim Tabs - manual  | 2.300 €   |
| XC5105 | Automatic control of roll and pitch in the trim tab (only with XC5101)                    | 1.450 €   |

## PACKAGES

|               |   |                |
|---------------|---|----------------|
| <b>XW2020</b> | <b>Navigation Package Basic</b>   | <b>7.050 €</b> |
| XN1501        | Raymarine AXIOM PRO 9 chart plotter at helm position with GPS antenna and transducer (depth, temp)  |                |
| XN1602        | Enlarged dashboard  |                |
| <b>XW2021</b> | <b>Upgrade to Navigation Package Basic XW2020- instead of AXIOM PRO 9</b>                           | <b>1.750 €</b> |
| XN1502        | Raymarine AXIOM PRO 12 chart plotter at helm position with GPS antenna and transducer (depth, temp) |                |
| <b>XW2000</b> | <b>Navigation Package</b>   | <b>9.550 €</b> |
| XN1501        | Raymarine AXIOM PRO 9 chart plotter at helm position with GPS antenna and transducer (depth, temp)  |                |

|        |  |
|--------|--|
| XN1602 | Enlarged dashboard                       |
| XN2101 | Raymarine Ray90 VHF                      |
| XN6001 | VHF antenna with splitter for FM and AIS |

|               |   |                |
|---------------|---|----------------|
| <b>XW2001</b> | <b>Upgrade to Navigation Package XW2000 - instead of AXIOM PRO 9</b>                                | <b>1.750 €</b> |
| XN1502        | Raymarine AXIOM PRO 12 chart plotter at helm position with GPS antenna and transducer (depth, temp) |                |

|               |   |                |
|---------------|---|----------------|
| <b>XW3110</b> | <b>Cruising Package Basic</b>                   | <b>7.200 €</b> |
| XB4005        | Anchor 10 kg, galvanized with 30 m of chain     |                |
| XB4010        | Windlass electric with automatic fuse           |                |
| XB4122        | 2 additional cleats at mid ship, 1 at each side |                |
| XV5001        | 4 fenders                                       |                |
| XV9902        | 4 mooring lines                                 |                |

|               |  |                |
|---------------|--|----------------|
| <b>XW3111</b> | <b>Upgrade to Cruising Package Basic XW3110 - instead of galvanized anchor</b> | <b>4.850 €</b> |
| XB4006        | Anchor 10 kg, stainless steel with 50 m of stainless steel chain               |                |
| XD1002        | Battery set, capacity: 3x 160 Ah   |                |
| XD2001        | Inverter/charger (only with XD1002)  |                |

|               |   |                 |
|---------------|---|-----------------|
| <b>XW3100</b> | <b>Cruising Package</b>                         | <b>12.500 €</b> |
| XB4005        | Anchor 10 kg, galvanized with 30 m of chain     |                 |
| XB4010        | Windlass electric with automatic fuse           |                 |
| XB4122        | 2 additional cleats at mid ship, 1 at each side |                 |
| XC6001        | Bowthruster, 4 hp                               |                 |
| XV1000        | Cockpit canopies (according to colour card)     |                 |
| XV5001        | 4 fenders                                       |                 |

XV9902 4 mooring lines

**XW3101 Upgrade to Cruising Package XW3100 - instead of galvanized anchor 4.850 €**

XB4006 Anchor 10 kg, stainless steel with 50 m of stainless steel chain

XD1002 Battery set, capacity: 3x 160 Ah

XD2001 Inverter/charger (only with XD1002)

**XW5010 Comfort Package Basic 8.800 €**

XB1032 Teak on cockpit floor, bathing platform and steps to the sidewalk

XD3202 Toilet, electrical

XU1020 Sunbed cushions for foredeck convertible in seating bench  
(according to colour card)

XV9060 Blinds for hull windows

XV9061 Blinds for hatches

**XW5011 Upgrade to Comfort Package Basic XW5010 - instead of teak 1.100 €**

XB1033 Synthetic teak on cockpit floor, bathing platform and steps to the sidewalk (according to colour card)

**XW5000 Comfort Package 13.950 €**

XB1032 Teak on cockpit floor, bathing platform and steps to the sidewalk

XB4310 Freshwater wash down

XD3202 Toilet, electrical

XD4020 6 LED lights in cockpit (ceiling)

XD5011 2nd fridge, openable from cockpit

XU1020 Sunbed cushions for foredeck convertible in seating bench  
(according to colour card)

XV7500 Mosquito nets in fwd hatch

XV9060 Blinds for hull windows

XV9061 Blinds for hatches

XV9140 Curtains on bifold door and tilting window

**XW5001 Upgrade to Comfort Package XW5000 - instead of teak 1.100 €**

XB1033 Synthetic teak on cockpit floor, bathing platform and steps to the sidewalk (according to colour card)

**XW6500 Smart Connection Package 2.990 €**

XE3110 WLAN router

XN3820 Interior camera

**XW7000 Entertainment Package - saloon and cockpit (only with XN6001 or XW2000) 2.800 €**

XE2000 FUSION APOLLO MS-RA770 with AM/FM in saloon

XE2101 2 high-end 2 way speakers in saloon

XE2107 2 high-end 2 way speakers in cockpit

XE2207 FUSION MS-ERX400 remote control at helm position

**XW7002 Entertainment Package - owner cabin (only with XE5111 and XN6001 or XW2000) 2.700 €**

XE2002 FUSION APOLLO MS-RA770 with AM/FM in master cabin

XE2103 2 high-end 2 way speakers in master cabin

XE5002 TV flat screen in master cabin

XE5012 TV preparation in master cabin



|               |   |                |
|---------------|---|----------------|
| <b>XW7501</b> | <b>TV Package - saloon (only with XE5111)</b> | <b>1.850 €</b> |
|---------------|---|----------------|

|        |                          |
|--------|--------------------------|
| XE5001 | TV flat screen in saloon |
| XE5010 | TV preparation in saloon |
| XE5051 | TV bracket               |

|                |                  |
|----------------|------------------|
| <b>OPTIONS</b> | <b>excl. VAT</b> |
|----------------|------------------|

|             |
|-------------|
| <b>HULL</b> |
|-------------|

|        |   |          |
|--------|---|----------|
| XA1001 | GRP hull, painted, non metallic (according to colour card)  | 12.750 € |
| XA1002 | GRP hull, painted, metallic (according to colour card)      | 17.350 € |
| XA2001 | Waterline, painted, non metallic (according to colour card) | 1.100 €  |
| XA2002 | Waterline, painted, metallic (according to colour card)     | 1.300 €  |
| XA5105 | Openable porthole in Glass in master cabin on port side     | 1.000 €  |

|                           |
|---------------------------|
| <b>DECK &amp; COCKPIT</b> |
|---------------------------|

|        |   |         |
|--------|---|---------|
| XB1022 | Teak on side decks  | 7.550 € |
| XB1023 | Synthetic teak on side decks (according to colour card)   | 7.750 € |
| XB1505 | Hull fender strip in white rubber with stainless steel insert   | 2.200 € |
| XB1506 | Hull fender strip 80 mm in grey rubber  | 2.200 € |
| XB3111 | Electric sun roof above saloon with blinds  | 5.650 € |
| XB3201 | Opening door to sidewalk on starboard side  | 4.490 € |
| XB3303 | Manual openable window on port side in saloon   | 2.300 € |
| XB3311 | Mirrored windows for saloon, tilting window and bifold door   | 8.100 € |
| XB3501 | 2 side platform extensions with teak (only with XW5000 or XW5010)   | 4.850 € |
| XB3506 | 2 side platform extensions with with synthetic teak (according to colour card - only with XW5000 and XW5001 or XW5010 and XW5011) | 5.550 € |
| XB3550 | Wire railing  | 600 €   |

|        |  |         |
|--------|--|---------|
| XB4110 | Anchor chain counter (only with XW3100 or XW3101 or XW3110 or XW3111)  | 990 €   |
| XB4122 | 2 additional cleats at mid ship, 1 at each side  | 700 €   |
| XB4300 | Freshwater dockside connection in transom  | 550 €   |
| XB4310 | Freshwater wash down   | 1.000 € |
| XB5011 | Foldable copilot seat port side (only with XL7001)   | 1.400 € |
| XB5101 | Convertible aft backrests lower and raise (manual) in cockpit  | 2.300 € |
| XB5500 | Cockpit table, foldable with cover   | 2.450 € |
| XB5501 | Cockpit table, foldable with cover, to be transformed into sunpad ( 2 sets of legs with different heights and upholstery on top) | 3.200 € |

|                             |
|-----------------------------|
| <b>ELECTRICAL EQUIPMENT</b> |
|-----------------------------|

|        |   |          |
|--------|---|----------|
| XD1002 | Battery set, capacity: 3x 160 Ah  | 750 €    |
| XD1110 | Deep charge protection for service batteries                                  | 1.390 €  |
| XD1601 | Country Version: US / JPN   | 4.050 €  |
| XD1602 | Country Version: UK   | 800 €    |
| XD2001 | Inverter/charger (only with XD1002)   | 3.250 €  |
| XD3001 | Fisher Panda generator 5000i, 4.0 kW  | 14.900 € |
| XD3101 | 2nd shore power 230 V or 110 V  | 1.850 €  |
| XD4052 | Indirect light in saloon, head and cabins                                     | 2.250 €  |
| XD5002 | Ceramic stove (only with XD5150 and XD3001 or XD3101 or XD6001 or XD6002)     | 1.450 €  |
| XD5011 | 2nd fridge, openable from cockpit   | 2.200 €  |
| XD5150 | Microwave (not with standard gas oven)  | 900 €    |
| XD5200 | Gas Leak Detector   | 850 €    |
| XD6001 | Air conditioning Class E (European), incl. 2nd shore power (only with XD3001) | 14.000 € |

|        |  |          |
|--------|--|----------|
| XD6002 | Air conditioning Class G (Gulf), incl. 2nd shore power (only with XD3001)            | 15.250 € |
| XD7001 | Hot air heating in aft cabin, bow cabin, head and saloon (not with XD6001 or XD6002) | 4.550 €  |
| XD8003 | Grey-water tank with electric pump for overboard discharge or deck suction           | 3.350 €  |
| XD8110 | Hot water boiler (only with XD2001 or XD3001)  | 1.150 €  |

## ENTERTAINMENT

|        |                           |         |
|--------|---------------------------|---------|
| XE5111 | DVB-T2 digital tv antenna | 1.050 € |
|--------|---------------------------|---------|

## NAVIGATION &amp; INSTRUMENTS

|        |  |         |
|--------|--|---------|
| XN1602 | Enlarged dashboard   | 3.450 € |
| XN2001 | Raymarine Quantum Radar 2 (only with XN2020 and XW2000 or XW2020)  | 4.200 € |
| XN2020 | Enlarged mast  | 500 €   |
| XN3500 | AIS (only with XW2000 or XW2020)   | 1.750 € |
| XN3560 | MySEALINE Safety Cloud hardware with 30 days free trial subscription and an interior light, switchable by APP  | 1.290 € |
| XN3600 | Raymarine fishfinder (only with XW2000 or XW2020)  | 1.800 € |
| XN3815 | Raymarine ClearCruise Augmented Reality (AR) incl. Gyroscope, GPS antenna and Raymarine IP67 camera installed in the roof (only with XW2000 or XW2020) | 2.750 € |
| XN6001 | VHF antenna with splitter for FM and AIS   | 750 €   |
| XN9200 | Spotlight with remote control (only with XN2020)   | 900 €   |

## LAYOUT &amp; INTERIOR

|        |  |         |
|--------|--|---------|
| XL2002 | B2: Guest cabin with double berth, 1 wardrobe, 1 seat and storage  | 550 €   |
| XL7001 | Saloon table, foldable, with manual high/low leg which converts into a bed                               | 2.550 € |
| XL8001 | Worktop in galley - SPRING WHITE (frames in marine mineral stone, top in HPL - according to colour card) | 550 €   |

## UPHOLSTERY &amp; WOOD

|        |  |         |
|--------|--|---------|
| XU1001 | Interior upholstery - BALI (according to colour card)                                | 900 €   |
| XU1002 | Interior upholstery - CAPETOWN (according to colour card)                            | 1.050 € |
| XU1003 | Interior upholstery - LIMA (according to colour card)                                | 1.500 € |
| XU1004 | Interior upholstery - LONG ISLAND LEATHER (according to colour card)                 | 3.150 € |
| XU1005 | Upholstery upgrade in saloon, with pillows (according to colour card)                | 1.250 € |
| XU1011 | Exterior upholstery - SARDINIA (according to colour card)                            | 750 €   |
| XU1012 | Exterior upholstery - MADEIRA (according to colour card)                             | 600 €   |
| XU1013 | Exterior upholstery - MALIBU (according to colour card)                              | 750 €   |
| XU1020 | Sunbed cushions for foredeck convertible in seating bench (according to colour card) | 2.500 € |
| XU1031 | Upholstery helmsman seat - BALI (according to colour card)                           | 350 €   |
| XU1032 | Upholstery helmsman seat - CAPETOWN (according to colour card)                       | 400 €   |
| XU1033 | Upholstery helmsman seat - LIMA (according to colour card)                           | 450 €   |
| XU1034 | Upholstery helmsman seat - LONG ISLAND LEATHER (according to colour card)            | 600 €   |
| XU1110 | Comfort mattresses for all berths  | 1.150 € |
| XU1500 | Carpet in saloon (according to colour card)  | 1.350 € |

|        |  |         |
|--------|--|---------|
| XU1510 | Carpet in cabins (according to colour card)  | 800 €   |
| XU5001 | Furniture - ONTARIO OAK (according to colour card) and ceramic top on the galley cover       | 5.650 € |
| XU5002 | Furniture - SHERWOOD CHESTNUT (according to colour card) and ceramic top on the galley cover | 5.100 € |
| XU5003 | Furniture - ATLANTA WALNUT (according to colour card) and ceramic top on the galley cover    | 4.150 € |
| XU5100 | Furniture - HIGH GLOSS FINISH (only for XU5002 or XU5003)                                    | 8.450 € |
| XU6011 | Floorboard in saloon, galley and cabins - VELVET OAK (according to colour card)              | 1.150 € |
| XU6012 | Floorboard in saloon, galley and cabins - VENECIAN BLACK WALNUT (according to colour card)   | 900 €   |
| XU6013 | Floorboard in saloon, galley and cabins - CALIFORNIAN OAK (according to colour card)         | 1.150 € |

All mentioned prices in €, basic prices ex yard and excl. VAT. All weights and measures are calculated numbers based on the construction data. Changes in construction and equipment reserved. Above mentioned prices are recommended for ex yard deliveries within 4 month after order confirmation. For later delivery time the company reserves right to apply latest price list. Company reserves additional 15 working days when painted hull or deck is ordered. All measurements/figures are approximate. Errors and omissions excepted. Specification and material can be changed without notice. Valid from 2023.01.01 for deliveries until 2023.12.31.

## ACCESSORIES

|        |   |         |
|--------|---|---------|
| XV1007 | Outside screen cover, front and side triangle screen (according to colour card)                           | 2.050 € |
| XV1008 | Cover for bow cushions (according to colour card)   | 1.150 € |
| XV9100 | Plissee blinds for side windows in saloon, first triangle excluded  | 3.350 € |
| XV9380 | Shrink wrap foil (for storage purpose only / not for transport) (not with XA1001, XA1002, XA2001, XA2002) | 1.100 € |

## TRANSPORT

|        |  |         |
|--------|--|---------|
| XZ2001 | Loading on truck with disassembled deck parts and antennas | 650 €   |
| XZ2010 | Oversea shipping cradle                                    | 3.350 € |
| XZ2020 | Ready for pickup   | 600 €   |