



## SPECIFICATION & PRICELIST C335

### PRINCIPAL DIMENSIONS according to ISO 8666

Length Overall (Lmax)	10.31 m	33' 10"
Length of Hull (LH)	9.99 m	32' 9"
Beam (BH)	3.50 m	11' 6"
Draught (Tmax)	1.03 m	3' 5"
Air Height	3.42 m	11' 3"
Fuel capacity	570 l	125 UK gal
Water capacity	220 l	48 UK gal
Displacement	6.67 t	6.57 UK t
CE Category	B	B
Max. persons	8	8



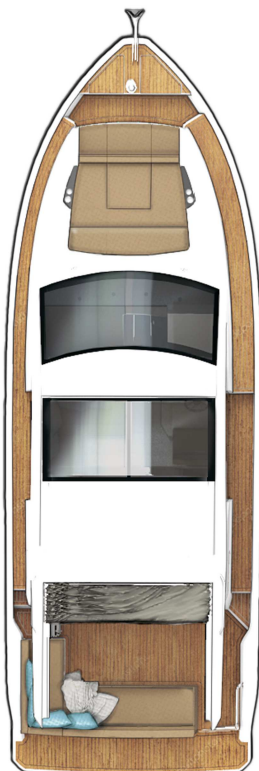
### ENGINE STANDARD

1 x Volvo Penta D6-340 25/26 knots\*

### ENGINE OPTIONS

1 x Volvo Penta D6-440 30/31 knots\*  
 2 x Mercury MD3,0L 270 hp TBC knots\*

\*All performance figures are given in good faith and are intended as an indication. These figures cannot be guaranteed as top speed in particular is affected by the cleanliness of the hull, conditions of the propellers, weight carried and air/sea temperature. Performance is related also to the optional accessories selected. SEALINE reserves the right to change specifications in line with the company policy of improvement through research and development. Standard Propeller tested in Greifswald according to Volvo conditions. All measurements/figures approximate. Errors and omissions excepted. Specification and material can be changed without notice. Please check with your dealer for a full list of inclusions. \*\*To be confirmed after seatrial. Valid from 2023.01.01 for deliveries until 2023.12.31.



ROOF  
standard



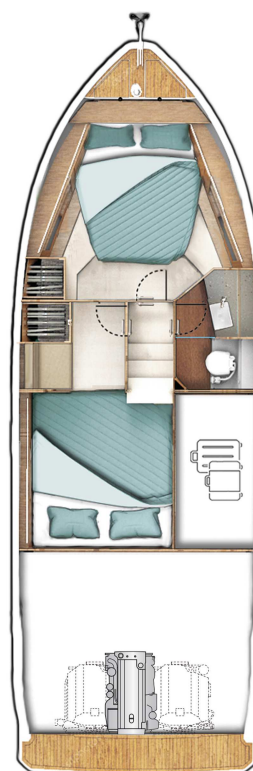
MAIN DECK  
optional  
with fixed cockpit  
table and extended  
bathing platform

C1



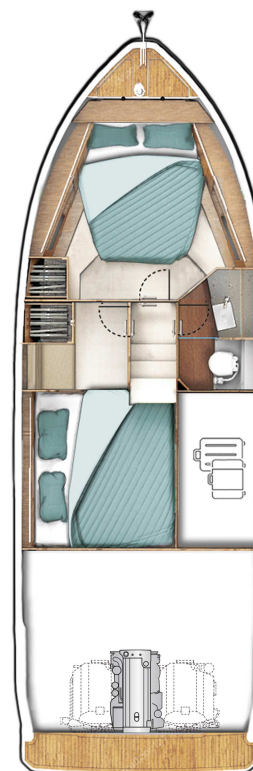
MAIN DECK  
optional  
with cockpit table to  
be transformed into  
sunpad and extended  
bathing platform

C1



LOWER DECK  
standard

A1



LOWER DECK  
optional

B1

A1

B2

## HULL

- GRP hull with sandwich construction, isophthalic gelcoat, colour: STAR WHITE, 1st layer vinyl ester resin
- Waterline, isophthalic gelcoat, colour: BLACK
- Aft pillar vinyl wrapped in GREY with SEALINE logo
- 3 hull windows (master cabin port side and starboard side, VIP cabin port side)
- 3 hull windows with openable porthole (VIP cabin port side, toilet and master cabin starboard side)

## DECK & COCKPIT

- GRP deck with antislip surface, isophthalic gelcoat, colour: STAR WHITE, 1st layer vinyl ester resin, anchor locker self draining, anchor arm stainless steel
- Hull fender strip in black rubber
- SEALINE steering wheel and throttles
- Full windscreen with pantograph wipers and screen wash
- Panoramic full glass windows and one fixed skylight in saloon
- SEALINE convertible fabric roof system in cockpit, manual
- Bifold door between cockpit and galley and tilting window to enlarge galley into cockpit
- Bathing platform in fiberglass, bathing ladder with handrail and bathing shower with hot and cold water and opening stainless steel gate.
- Stainless steel pulpit, 4 stainless steel mooring cleats, stainless steel handrails
- Seating "L"-shaped bench with fixed backrest at stern and port side with storage and foldable teak bar, manual bimini
- Bench at bow, GRP surface
- Manual engine hatch

## PROPULSION

- Engine room, sound insulated, fans with fire extinguisher system, automatic and manual, Batteries-Engines: 1x 95 Ah, Battery charger 50 A (for engine and service batteries)
- 1 Volvo Penta D6 (340 hp) stern drive propeller: H3, Volvo engine instrumentation
- Volvo engine instrumentation 2.5" display
- Fuel tank, capacity: 570 litres
- Fuel Filter

## ELECTRICAL EQUIPMENT

- 12 V and 230 V electric system with 230 V shore power connection. Sockets in saloon (2), master cabin (1), guest cabin (1), galley (2), toilet (1) and 12 V on dashboard (1)
- Batteries-Service: 2 x 160 Ah
- Country Version: EU / AUS
- Manual toilet
- Light in cabins, saloon and galley with dimmer. Dimmable indirect lights and reading lights in cabins. Lights in toilet, cockpit and engine room.
- Holding tank (85 l)
- Water tank (220 l) with gauge, fresh water pump and boiler (22 l)
- Bilge pumps: automatic electric (2) and manual emergency bilge pump in cockpit (1)

## NAVIGATION & INSTRUMENTS

- Standard dashboard with engine room fire extinguisher system
- Compass
- Navigation lights

## LAYOUT & INTERIOR

- A1: Master cabin with double berth, 1 wardrobe, drawers underneath the bed, various lockers and storage boxes. 3 skylights, one openable. Fully equipped head with separated shower stall, handheld shower and comfort seat with fiberglass cover. Manual toilet.

- B1: Guest cabin with twin berths, 1 wardrobe, 1 seat and storage
- C1: Saloon with "L"-shaped sofa and pilot seat. Galley with stowage, fridge, gas stove - two-burner, 1 gas oven and sink with draining basin.
- Saloon table with fixed leg
- Counter tops in galley, in BISTRO material (according to colour card)

## UPHOLSTERY & WOOD

- Interior upholstery scheme CASABLANCA, colour: PEARL WHITE (according to colour card)
- Exterior seating material in SARDINIA, colour: GULL WING (according to colour card)
- Upholstery helmsman seat material in CASABLANCA, colour: PEARL WHITE (according to colour card)
- Standard mattresses in all cabins
- Interior furniture in high quality marine plywood: MADISON WOOD (according to colour card)
- Floorboard in saloon, galley and cabins - AUSTRALIAN ACACIA (according to colour card)
- Heads flooring - wood style

## TRANSPORT

- Declaration of Conformity
- Safety manual
- Identified locations for hand held fire extinguishers - (hand held fire extinguishers are not supplied), SEALINE Owner's Manual in SEALINE document bag

## AS PER STANDARD SPECIFICATION

excl. VAT  
283.000 €

## PROPULSION

XC2001	Volvo Penta D6-340 (340 hp), Duoprop stern drive (single engine) with propeller H2	400 €
XC2007	Volvo Penta D6-440 (440 hp), Duoprop stern drive (single engine) with propeller (tbc)	32.900 €
XC2011	2 Mercury MD3,0L (270 hp) with stern drive, propeller and engine instrumentation	46.300 €
XC4999	Joystick for Mercury stern drives (only with XC2011)	8.150 €
XC5011	Volvo Penta multifunction 7" display	4.450 €
XC5012	1 x 7" Mercury Vessel View multifunction display instead of 2 x 4" (only with XC2011)	1.340 €
XC5101	Automatic control of roll and pitch in the trim tab (only with XW3100 or XW3101 or XW3110 or XW3111)	1.450 €
XC7001	Steering wheel, adjustable tilt	800 €

## PACKAGES

<b>XW2020</b>	<b>Navigation Package Basic</b>	<b>7.050 €</b>
XN1501	Raymarine AXIOM PRO 9 chart plotter at helm position with GPS antenna and transducer (depth, temp)	
XN1602	Enlarged dashboard	
<b>XW2021</b>	<b>Upgrade to Navigation Package Basic XW2020 - instead of AXIOM PRO 9</b>	<b>1.750 €</b>
XN1502	Raymarine AXIOM PRO 12 chart plotter at helm position with GPS antenna and transducer (depth, temp)	

<b>XW2000</b>	<b>Navigation Package</b>	<b>13.700 €</b>
---------------	---------------------------	-----------------

XN1501	Raymarine AXIOM PRO 9 chart plotter at helm position with GPS antenna and transducer (depth, temp)
XN1602	Enlarged dashboard
XN2101	Raymarine Ray90 VHF
XN3001	Raymarine Autopilot with control unit at helm position
XN6001	VHF antenna with splitter for FM and AIS

<b>XW2001</b>	<b>Upgrade to Navigation Package XW2000 - instead of AXIOM PRO 9</b>	<b>1.750 €</b>
---------------	--	----------------

XN1502	Raymarine AXIOM PRO 12 chart plotter at helm position with GPS antenna and transducer (depth, temp)
--------	---

<b>XW3110</b>	<b>Cruising Package Basic</b>	<b>8.400 €</b>
---------------	-------------------------------	----------------

XB4005	Anchor 10 kg, galvanized with 30 m of chain
XB4010	Windlass electric with automatic fuse
XB4122	2 additional cleats at mid ship, 1 at each side
XC5100	Trim Tabs
XC7001	Steering wheel, adjustable tilt
XV5001	4 fenders
XV9902	4 mooring lines

<b>XW3111</b>	<b>Upgrade to Cruising Package Basic XW3110 - instead of galvanized anchor</b>	<b>4.850 €</b>
---------------	--	----------------

XB4006	Anchor 10 kg, stainless steel with 50 m of stainless steel chain
XD1002	Battery set, capacity: 3x 160 Ah
XD2001	Inverter/charger (only with XD1002)

**XW3100 Cruising Package 14.390 €**

XB4005	Anchor 10 kg, galvanized with 30 m of chain
XB4010	Windlass electric with automatic fuse
XB4122	2 additional cleats at mid ship, 1 at each side
XC5100	Trim Tabs
XC6001	Bowthruster, 4 hp
XC7001	Steering wheel, adjustable tilt
XV1000	Cockpit canopies (according to colour card)
XV5001	4 fenders
XV9902	4 mooring lines

**XW3101 Upgrade to Cruising Package XW3100 - instead of galvanized anchor 4.850 €**

XB4006	Anchor 10 kg, stainless steel with 50 m of stainless steel chain
XD1002	Battery set, capacity: 3x 160 Ah
XD2001	Inverter/charger (only with XD1002)

**XW5010 Comfort Package Basic 8.800 €**

XB1032	Teak on cockpit floor, bathing platform and steps to the sidewalk
XD3202	Toilet, electrical
XU1020	Sunbed cushions for foredeck convertible in seating bench (according to colour card)
XV9060	Blinds for hull windows
XV9061	Blinds for hatches

**XW5011 Upgrade to Comfort Package Basic XW5010 - instead of teak 1.100 €**

XB1033	Synthetic teak on cockpit floor, bathing platform and steps to the sidewalk (according to colour card)
--------	--

**XW5000 Comfort Package 13.950 €**

XB1032	Teak on cockpit floor, bathing platform and steps to the sidewalk
XB4310	Freshwater wash down
XD3202	Toilet, electrical
XD4020	6 LED lights in cockpit (ceiling)
XD5011	2nd fridge, openable from cockpit
XU1020	Sunbed cushions for foredeck convertible in seating bench (according to colour card)
XV7500	Mosquito nets in fwd hatch
XV9060	Blinds for hull windows
XV9061	Blinds for hatches
XV9140	Curtains on bifold door and tilting window

**XW5001 Upgrade to Comfort Package XW5000 - instead of teak 1.100 €**

XB1033	Synthetic teak on cockpit floor, bathing platform and steps to the sidewalk (according to colour card)
--------	--

**XW6500 Smart Connection Package 2.990 €**

XE3110	WLAN router
XN3820	Interior camera



XW7000	Entertainment Package - saloon and cockpit (only with XN6001 or XW2000)	2.800 €
--------	---	---------

XE2000	FUSION APOLLO MS-RA770 with AM/FM in saloon
XE2101	2 high-end 2 way speakers in saloon
XE2107	2 high-end 2 way speakers in cockpit
XE2207	FUSION MS-ERX400 remote control at helm position

XW7002	Entertainment Package - owner cabin (only with XE5111 and XN6001 or XW2000)	2.700 €
--------	---	---------

XE2002	FUSION APOLLO MS-RA770 with AM/FM in master cabin
XE2103	2 high-end 2 way speakers in master cabin
XE5002	TV flat screen in master cabin
XE5012	TV preparation in master cabin

XW7501	TV Package - saloon (only with XE5111)	1.850 €
--------	--	---------

XE5001	TV flat screen in saloon
XE5010	TV preparation in saloon
XE5051	TV bracket

## OPTIONS

excl. VAT

## HULL

XA1001	GRP hull, painted, non metallic (according to colour card)	12.750 €
XA1002	GRP hull, painted, metallic (according to colour card)	17.350 €
XA2001	Waterline, painted, non metallic (according to colour card)	1.100 €
XA2002	Waterline, painted, metallic (according to colour card)	1.300 €
XA5105	Openable porthole in Glass in master cabin on port side	1.000 €

## DECK &amp; COCKPIT

XB1022	Teak on side decks	7.550 €
XB1023	Synthetic teak on side decks (according to colour card)	7.750 €
XB1505	Hull fender strip in white rubber with stainless steel insert	2.200 €
XB1506	Hull fender strip 80 mm in grey rubber	2.200 €
XB3111	Electric sun roof above saloon with blinds	5.650 €
XB3201	Opening door to sidewalk on starboard side	4.490 €
XB3303	Manual openable window on port side in saloon	2.300 €
XB3311	Mirrored windows for saloon, tilting window and bifold door	8.100 €
XB3501	Bathing platform extension with teak (only with XW5000 or XW5010)	5.500 €
XB3506	Bathing platform extension with synthetic teak (according to colour card - only with XW5000 and XW5001 or XW5010 and XW5011)	6.200 €
XB3550	Wire railing	600 €
XB4110	Anchor chain counter (only with XW3100 or XW3101 or XW3110 or XW3111)	990 €
XB4122	2 additional cleats at mid ship, 1 at each side	700 €
XB4300	Freshwater dockside connection in transom	550 €
XB4310	Freshwater wash down	1.000 €
XB5011	Foldable copilot seat port side (only with XL7001)	1.400 €
XB5101	Convertible aft backrests lower and raise (manual) in cockpit	2.300 €
XB5500	Cockpit table, foldable with cover	2.450 €
XB5501	Cockpit table, foldable with cover, to be transformed into sunpad ( 2 sets of legs with different heights and upholstery on top)	3.200 €

## ELECTRICAL EQUIPMENT

XD1002	Battery set, capacity: 3x 160 Ah	750 €
XD1110	Deep charge protection for service batteries	1.390 €
XD1601	Country Version: US / JPN	4.050 €
XD1602	Country Version: UK	800 €
XD2001	Inverter/charger (only with XD1002)	3.250 €
XD3001	Fisher Panda generator 5000i, 4.0 kW	14.900 €
XD3101	2nd shore power 230 V or 110 V	1.850 €
XD4052	Indirect light in saloon, head and cabins	2.250 €
XD5002	Ceramic stove (only with XD5150) (only with XD3001 or XD3101 or XD6001 or XD6002)	1.450 €
XD5011	2nd fridge, openable from cockpit	2.200 €
XD5150	Microwave (not with standard gas oven)	900 €
XD5200	Gas Leak Detector	850 €
XD6001	Air conditioning Class E (European) incl. 2nd shore power (only with XD3001)	14.000 €
XD6002	Air conditioning Class G (Gulf) incl. 2nd shore power (only with XD3001)	15.250 €
XD7001	Hot air heating in aft cabin, bow cabin, head and saloon (not with XD6001 or XD6002)	4.550 €
XD8003	Grey-water tank with electric pump for overboard discharge or deck suction	3.350 €

## ENTERTAINMENT

XE5111	DVB-T2 digital tv antenna	1.050 €
--------	---------------------------	---------

## NAVIGATION &amp; INSTRUMENTS

XN1602	Enlarged dashboard	3.450 €
XN2001	Raymarine Quantum Radar 2 (only with XN2020 and XW2000 or XW2020)	4.200 €
XN2020	Enlarged mast	500 €
XN3500	AIS (only with XW2000 or XW2020)	1.750 €
XN3560	MySEALINE Safety Cloud hardware with 30 days free trial subscription and an interior light, switchable by APP	1.290 €
XN3600	Raymarine fishfinder (only with XW2000 or XW2020)	1.800 €
XN3815	Raymarine ClearCruise Augmented Reality (AR) incl. Gyroscope, GPS antenna and Raymarine IP67 camera installed in the roof (only with XW2000 or XW2020)	2.750 €
XN6001	VHF antenna with splitter for FM and AIS	750 €
XN9200	Spotlight with remote control (only with XN2020)	900 €

## LAYOUT &amp; INTERIOR

XL2002	B2: Guest cabin with double berth, 1 wardrobe, 1 seat and storage	550 €
XL7001	Saloon table, foldable, with manual high/low leg which converts into a bed	2.550 €
XL8001	Worktop in galley - SPRING WHITE (frames in marine mineral stone, top in HPL - according to colour card)	550 €

## UPHOLSTERY &amp; WOOD

XU1001	Interior upholstery - BALI (according to colour card)	900 €
XU1002	Interior upholstery - CAPETOWN (according to colour card)	1.050 €
XU1003	Interior upholstery - LIMA (according to colour card)	1.500 €
XU1004	Interior upholstery - LONG ISLAND LEATHER (according to colour card)	3.150 €

XU1005	Upholstery upgrade in saloon, with pillows (according to colour card)	1.250 €
XU1011	Exterior upholstery - SARDINIA (according to colour card)	750 €
XU1012	Exterior upholstery - MADEIRA (according to colour card)	600 €
XU1013	Exterior upholstery - MALIBU (according to colour card)	750 €
XU1020	Sunbed cushions for foredeck convertible in seating bench (according to colour card)	2.500 €
XU1031	Upholstery helmsman seat - BALI (according to colour card)	350 €
XU1032	Upholstery helmsman seat - CAPETOWN (according to colour card)	400 €
XU1033	Upholstery helmsman seat - LIMA (according to colour card)	450 €
XU1034	Upholstery helmsman seat - LONG ISLAND LEATHER (according to colour card)	550 €
XU1110	Comfort mattresses for all berths	1.150 €
XU1500	Carpet in saloon (according to colour card)	1.350 €
XU1510	Carpet in cabins (according to colour card)	800 €
XU5001	Furniture - ONTARIO OAK (according to colour card) and ceramic top on the galley cover	5.650 €
XU5002	Furniture - SHERWOOD CHESTNUT (according to colour card) and ceramic top on the galley cover	5.100 €
XU5003	Furniture - ATLANTA WALNUT (according to colour card) and ceramic top on the galley cover	4.150 €
XU5100	Furniture - HIGH GLOSS FINISH (only for XU5002 or XU5003)	8.450 €
XU6011	Floorboard in saloon, galley and cabins - VELVET OAK (according to colour card)	1.150 €
XU6012	Floorboard in saloon, galley and cabins - VENECIAN BLACK WALNUT (according to colour card)	900 €
XU6013	Floorboard in saloon, galley and cabins - CALIFORNIAN OAK (according to colour card)	1.150 €

## ACCESSORIES

XV1007	Outside screen cover, front and side triangle screen (according to colour card)	2.050 €
XV1008	Cover for bow cushions (according to colour card)	1.150 €
XV9100	Plissee blinds for side windows in saloon, first triangle excluded	3.350 €
XV9380	Shrink wrap foil (for storage purpose only / not for transport) (not with XA1001, XA1002, XA2001, XA2002)	1.100 €

## TRANSPORT

XZ2001	Loading on truck with disassembled deck parts and antennas	650 €
XZ2010	Oversea shipping cradle	3.350 €
XZ2020	Ready for pickup	600 €

All mentioned prices in €, basic prices ex yard and excl. VAT. All weights and measures are calculated numbers based on the construction data. Changes in construction and equipment reserved. Above mentioned prices are recommended for ex yard deliveries within 4 month after order confirmation. For later delivery time the company reserves right to apply latest price list. Company reserves additional 15 working days when painted hull or deck is ordered. All measurements/figures are approximate. Errors and omissions excepted. Specification and material can be changed without notice. Valid from 2023.01.01 for deliveries until 2023.12.31.